



IRay Technology Co., Ltd.

Add: 11th Guiyang Street, YEDA, Yantai 264006, P.R. China

Tel: 0086-400-998-3088

Web: www.iraytek.com

Email: sales@iraytek.com

ATTENTION

1. The rated charging voltage of this product is 5V, please charge timely when power is low, so as to avoid the service life loss caused by battery over-discharge.

2. The thermal imager is not recommended to use in high-temperature environment for a long time, if the temperature is too high, the imager will enter the high-temperature protection state, and automatically shut down.

3. The use of temperature is recommended at -10°C to $+50^{\circ}\text{C}$.

4. Make sure that the USB/MCX port cover on the bottom of the thermal imager is tightly plugged firstly when using in water environment, such as rainy days.

5. Under any circumstances (whether on or off), do not expose the thermal imager directly into the high-intensity radiation sources (such as the sun, laser, etc.), to avoid irreversible damage to the device.




6. The B correction mode will reduce the frequency of automatic shutter correction after the condition of the device become stable. If the image gets worse, please cover the lens cover for manual background correction.

7. When the device is not used for a long time, it should be charged at least 2 months during storage and stored in a dry and ventilated environment.

8. Do not shine the laser pointer on human eyes.

9. Do not be charged in an environment above 40°C .

Eye II Series

Model				
	E3Plus	E3Max	E6+	E6Pro
Detector Resolution	384×288	384×288	640×480	640×480
Pixel Size	17um	17um	17um	17um
NETD	≤40mk	≤40mk	≤40mk	≤40mk
Frame Rate	50Hz	50Hz	50Hz	50Hz
Objective Lens	25mm	35mm	35mm	50mm
Field of View	14.9°×11.2°	10.7°×8°	17°×13°	12°×9°
WiFi	√	√	√	√
Photo	√	√	√	√
Video	√	√	√	√
Laser(650nm)	√	√	√	√
Reticle	√	√	√	√
Stadiametric Rangefinder	√	√	√	√
Hot Target Tracking	√	√	√	√
PIP	√	√	√	√
E-zoom	×2/×4	×2/×4	×2/×4	×2/×4
Max. Battery Life	4.5h(Power saving mode)	4.5h(Power saving mode)	4h(Power saving mode)	4h(Power saving mode)
Weight	<450g	<450g	<450g	<520g
Dimension(mm)	181×65×64	186×65×64	188×65×64	202×65×64
Detection Range (Target: 1.7m×0.5m, P(n)=99%)	916m	1283m	1283m	1833m

★ Technical parameters of the device may be improved without prior notice of the customer.

THERMAL MONOCULAR II

QUICK START GUIDE

V4.0

IRay Technology Co., Ltd.

1. Switch On

The camera will be switched on by pressing the power button for 3 seconds in the condition of camera is off, the indicator light will be turned on, the startup screen will be shown on the internal ocular.

2. Switch Off

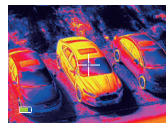
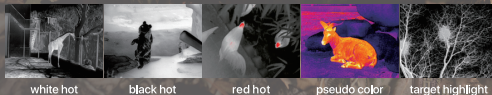
The camera will be switched off by depressing the Power button for 3s in the condition of camera is on. The camera will be switched off automatically if there is no operation over 20 minutes when in standby mode.

3. Standby Mode

When the camera is on, short press the Power button or no operation over 15 minutes, it will enter into standby mode with indicator light flickering. When WiFi is on or camera is recording or outputting video, automatic standby mode will not be triggered. Short press the Power button again to resume from standby mode to normal mode.

4. Switch the Image Mode

Short click the Image Mode button to switch the image mode from white hot, black hot, red hot, pseudo color, target highlight mode circularly.



5. Eyepiece Adjustment

The eyepiece adjustment can help user to get the clearest image for different eye conditions.



6. Laser/Reticle

In the normal display mode, long press the Image Mode button to perform the loop operation of "open laser and indicating cursor-close laser and open user cursor-close user cursor". The pointer cursor corresponds to the position 50 meters indicated by the laser.

7. E-Zoom

Short click the E-zoom button, the image will be electrical zoomed from 1x-2x-4x circularly.

x2/x4

8. Storage

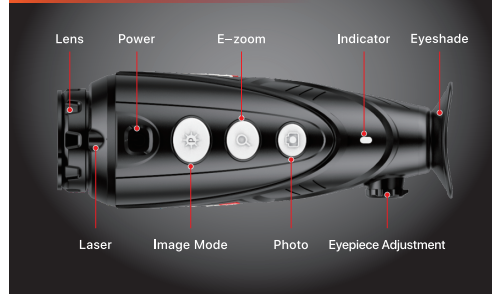
Short click the Photo button to enter into storage mode, and a camera symbol will be displayed at the right-up corner. In storage mode, short click the Photo button to take picture and long press to record video with a recording icon flickering on the right-up corner of the image. Long press again to quit from recording. It will exit the storage mode automatically without operation for 30 seconds.



9. Hot Spot Tracking

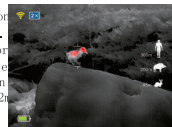
In normal display mode, long press Photo button to turn on hot spot tracking which can track the hottest objects on the screen.

COMPONENTS & CONTROLS



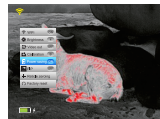
10. Stadiametric Rangefinder

Long press E-zoom and Image Mode button to turn on stadiametric rangefinder mode. In the rangefinder mode, short press or press image mode button to adjust object selecting rang. The distance of human (1.7m target), hog(0.9m target), hare (0.2m target) can be measured and displayed on the left of the corresponding icon.



11. Setting Menu

Long press the E-zoom button to enter the menu. Switch the menu options with the Image Mode and Photo button and adjust the current option parameters with the E-zoom button, including WiFi, screen brightness, analog video switch, calibration mode, power saving mode, PIP, reticle zeroing, factory reset, etc... Long press the E-zoom button to quit the menu.



12. Video Out

Turn on the analog video through the menu, and a video output icon will appear on the down-right corner of the image, then the analog video can be output to the monitor with the specific video cable through the MCX port.

13. NUC (Non-uniformity Correction)

Image degradation can be improved by manual correction. There are two mode available-B(background) and S(shutter), which can be switched through the menu. Press the E-zoom and Photo button at the same time to achieve the manual correction. If the correction mode B is selected, the lens cover shall be closed.

14. Power Saving Mode

When the power saving mode is activated, a symbol "S" will be displayed on the left side of battery icon. In power saving mode, functions of WiFi, photo and video recording are completely disabled, but the battery life can be extended to 5 hours (under the condition of ambient temperatures at 20°C).

15. Reticle Zeroing

Switch to the reticle zeroing interface through menu. In the reticle zeroing interface, short press the E-zoom button, switch between Up-Down adjustment mode and Left-Right adjustment mode. Short press the Image Mode button and Picture button to adjust the reticle position. Long press E-zoom button to save and exit the reticle zeroing interface.

16. Charge

If the indicator is red, that means the battery is insufficient, please charge in time. Open the USB cover at the bottom, plug the USB cable in the imager and the power supply for charging or use portable power to charge. When charging, the indicator light is yellow and green when full.

17. Data Catching

The photo and video in the internal SD card can be read through the APP which is specifically designed. Turn on the WiFi function in the menu, when mobile is connected to the WiFi signal, open the APP to read the picture and video in the SD card. If the camera is connected by PC through the WiFi connection, the data in the SD card can be read with browser or FTP clients. The default WiFi password is 12345678. The camera IP is ftp://192.168.11.123.